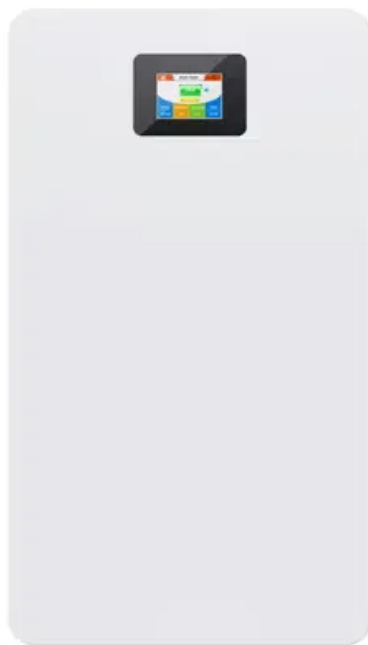


# **Battery installation for harsh environment communication base station**



## Overview

---

In this guide, I'll share proven methods for crafting MIL-STD-compliant, IP-rated battery solutions tailored to HF, VHF, and UHF radios, as well as rapid-deploy emergency comms kits.

## Battery installation for harsh environment communication base station

---



### Main Battery Change

Going to change the service battery in my 15 V40cc D2. Anything I need to be ware of or look out for ??



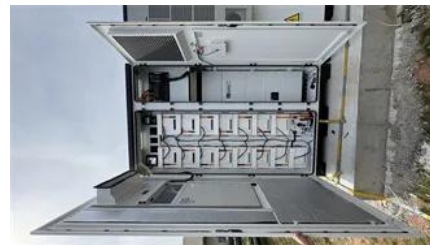
### Main Battery Replacement

Since that battery also supplies power to the ECU memory when the car is switched off, as well as powering the stop/start system , don't ignore it. Like the main battery, Volvo recommend



### Battery Recycling for Businesses

Battery Recycling for Businesses Use the chart below to determine how to handle used batteries generated by your business. Batteries that are considered hazardous must be recycled or managed



### Low battery charge error , Volvo V40 Forums

Hello everyone, I just bought my first car, a 2014 Volvo V40 T3, and a warning appears on the dashboard that says 'low battery charge.' The car is recently



### [Types of Batteries Used in Telecom: A Practical Guide](#)

As global demand for connectivity grows, telecom infrastructure must operate reliably across diverse and often harsh environments. Whether it's a 5G

### Battery Management Systems for Telecom Base

To ensure continuous operation during power outages or grid fluctuations, telecom operators deploy robust backup battery systems. However,



### Secondary Battery

My main battery just died, had it replaced with same, and car kept giving me Battery charging, so no stop start. When stop/start worked, it was for about 10 sec, and car would start, with

### "Low Battery Charge" HELP

Have the battery checked at dealers - and just using a multimeter on the battery won't show duff cells in the battery. A new battery-cured mine - any decent auto-electric garage could do it.



### [Battery installation for harsh environment communication base](#)

This paper focuses on the engineering application of battery in the power supply system of communication base stations, and focuses on the selection, installation and maintenance of

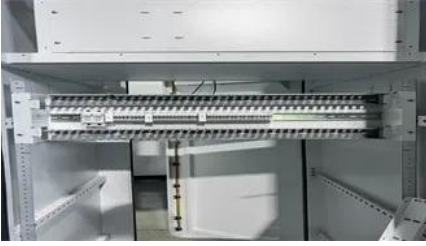
### [Multiple Warning Lights/Error Messages/Battery deterioration](#)

TBH I would look at a replacement battery on the back of that info - but can't you get one from where you bought it? I don't know what a compliance centre is but does the vehicle come with



### Battery issues

I've had both batteries replaced (with the correct



[Battery design and installation for communication base stations](#)

Which battery is best for telecom base station backup power? Among various battery technologies, Lithium Iron Phosphate (LiFePO4) batteries stand out as the ideal choice for telecom base station



models), done a 100 mile trip, overnight smart battery charge, charging voltage is fine, system messages cleared but I am still getting "low



[communication base station battery-Telecom Base Station](#)

Communication Base Station Batteries , LiFePO4 Backup Power Communication base station batteries are critical backup power systems, primarily utilizing Li

**Designing Rugged, Thermally Stable Batteries for**

In this guide, I'll share proven methods for crafting MIL-STD-compliant, IP-rated battery solutions tailored to HF, VHF, and UHF radios, as



**Household Battery Recycling**

Household battery recycling locations Lead-acid batteries, or "automotive type batteries," are banned from disposal. Consumers may bring lead-acid batteries to any Wisconsin retailer that sells these

[Construction Of Battery Equipment For Communication Base Stations](#)

Communication base station batteries are critical components that ensure uninterrupted service,

especially in remote or challenging environments. However, their applications extend far beyond this.



[Selection and maintenance of battery for communication base station](#)

Focused on the engineering applications of batteries in the communication stations, this paper introduces the selections, installations and maintenances of batteries for communication stations,

**Telecom Base Station Backup Power Solution: Design**

Discover the 48V 100Ah LiFePO4 battery pack for telecom base stations: safe, long-lasting, and eco-friendly. Optimize reliability with our design



**Low battery charge message**

The low battery charge message relates to the main battery. On vehicles with stop/start systems and intelligent alternators, the vehicle battery is designed to operate at around 80% SOC, to

**Optimization of Communication Base Station Battery**

In the communication power supply field, base station interruptions may occur due to sudden natural disasters or unstable power supplies. This



## Contact Us

For catalog requests, pricing, or partnerships, please visit:  
<https://peyronies.us>