

Distributed energy battery cabinet 200kW



Distributed energy battery cabinet 200kW



200KW/4800KWh C&I BESS with Solar and GEN , AINEGY

This product is a 200kW/480kWh industrial and commercial integrated energy storage cabinet utilizing Lithium Iron Phosphate (LFP) battery cells.

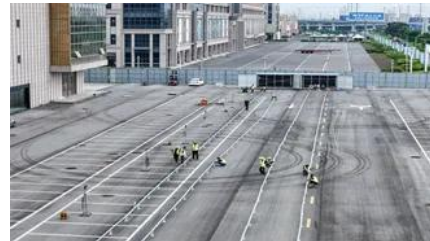


DistributedCOM Error. Solved

Distributed Component Object Model (DCOM) is a proprietary Microsoft technology for communication between software components on networked computers. DCOM, which originally

[DistributedCOM permission settings Error 10016 -should I resolve this?](#)

Inside W10's Event Viewer, I see an error with ID of 10016 (DistributedCOM). Its error description is - The application-specific permission settings d



DistributedCOM Event ID 10000

What should I do? Log Name: SystemSource: Microsoft-Windows-DistributedCOMDate: 4/27/2020 4:26:30 PMEvent ID: 10000Task Category: NoneLevel: ErrorKeywords: ClassicUser: SAM



Event ID 10016, DistributedCOM



Dawnice 200kWh Battery Storage Systems

The outdoor cabinet-type photovoltaic storage system, boasting a power rating of 100kW/200kWh, seamlessly amalgamates energy storage



Event ID 10016, DistributedCOM

Hi @ parsonm To solve COM errors, if you don't follow the Microsoft note, get a cli utility by Microsoft called dcomperm. Its source code is included with the Microsoft Windows SDK for



Do I need "Distributed Link Tracking

Also, the outcome is that, under normal conditions, the Microsoft Distributed Transaction Coordinator (MSDTC) service establishes a secure connection with the local System (Computer), not



Need Help with DistributedCOM 10010

In this video, i will guide you on how to fix DistributedCOM Event ID 10016 error in Windows 10 and Windows 11.



DistributedCOM Error. Solved

What u did by deleting all entries in the registry for GUID {1B562E86-B7AA-4131-BADC-B6F3A001407E} in the eventlog is it not the same as what Vaio 7 did by setting 0 to the dword to

Client"?

Do I need "Distributed Link Tracking Client"?
Read up on it, cant quite make it out if it's to my disadvantage (and how) in every day Computer life if I have it disabled.



[Windows 10 Event ID 10010 and 10016 Errors With DistributedCOM](#)

I am having a number of events that seem to be located repeatedly with the source:
DistributedCOM Event ID: 10010 and Event ID: 10016 also getting rep

[Store apps close immediately, Event 10010 with DistributedCOM](#)

Update: Just came back from re-installing and re-registering all Windows Store Apps (even the Store itself I noticed) and still having the same issue. Did a reboot just in case after



Contact Us

For catalog requests, pricing, or partnerships, please visit:
<https://peyronies.us>