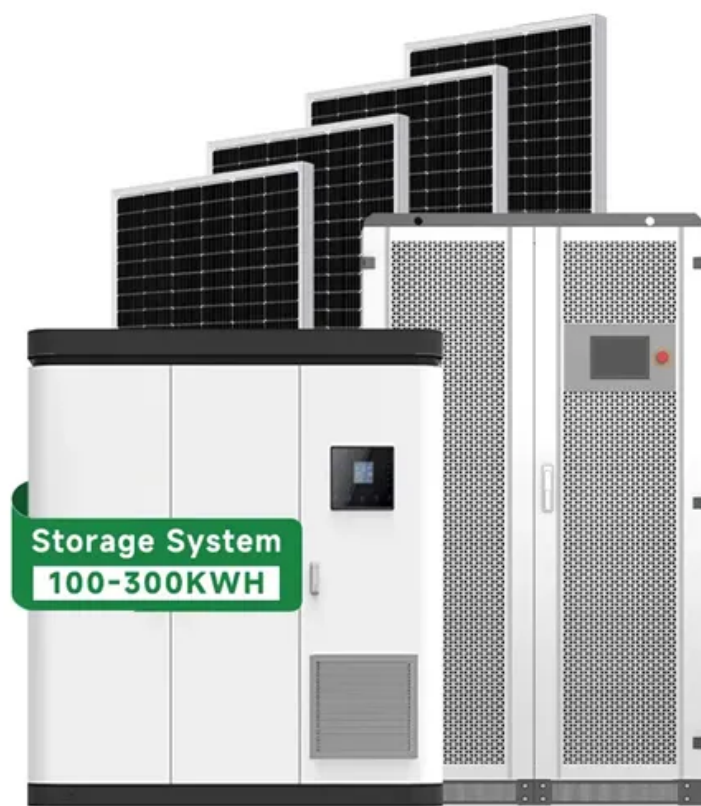


Function of 5g base station power distribution box



Function of 5g base station power distribution box



[Complete Guide to 5G Base Station Construction , Key Steps.](#)

The base station power system serves as a continuous "blood supply pump station," responsible for AC/DC conversion, filtering, voltage stabilization, and backup power.

How can I use a global variable in a function?

How do I create or use a global variable inside a function? How do I use a global variable that was defined in one function inside other functions? Failing to use the global keyword where



[Electric Load Profile of 5G Base Station in Distribution Systems Based](#)

This paper proposes an electric load demand model of the 5th generation (5G) base station (BS) in a distribution system based on data flow analysis. First, the electric load model of a 5G BS is

[var functionName = function\(\) {} vs function functionName\(\) {}](#)

The difference is that functionOne is a function expression and so only defined when that line is reached, whereas functionTwo is a function declaration and is defined as soon as its



[What does the exclamation mark do before the function?](#)

(function(){})(!); Lastly, ! makes the expression return a boolean based on the return value of the function. Usually, an immediately invoked function expression (IIFE) doesn't explicitly

return

syntax

I have seen the use of %>% (percent greater than percent) function in some packages like dplyr and rvest. What does it mean? Is it a way to write closure blocks in R?



Equipment Needed to Build a 5G Base Station

The baseband unit contains elements such as power amplifiers, filters, and frequency converters, and performs amplification, filtering, signal

[What is the \(function \(\) { } \) \(\) construct in JavaScript?](#)

What these functions do is that when the function is defined, The function is immediately called, which saves time and extra lines of code (as compared to calling it on a separate line).



[Collaborative optimization of distribution network and 5G base stations](#)

In this paper, a distributed collaborative optimization approach is proposed for power distribution and communication networks with 5G base stations. Firstly, the model of 5G base

What does -> mean in Python function definitions?

PEP 3107 -- Function Annotations described the specification, defining the grammar changes, the existence of func.__annotations__ in which they are stored and, the fact that it's use



[What is the purpose of a self executing function in javascript?](#)



[5G Base Station Power Supply with Battery & DC Distribution](#)

This 5G base station power supply system integrates battery backup, DC power distribution, and advanced control modules to ensure reliable energy support for critical telecom infrastructure.



[How to pass arguments to addEventListener listener function?](#)

Learn how to pass arguments to addEventListener listener functions effectively in JavaScript with this guide.

javascript

A function of that nature can be called at any time, anywhere. jQuery (a library built on Javascript) has built in functions that generally required the DOM to be fully rendered before being called.



Simplifying Your 5G Base Transceiver Station

The device provides the high radio performance and low power consumption demanded by cellular infrastructure applications such as small cell

How do function pointers in C work?

359 Function pointers in C can be used to perform object-oriented programming in C. For example, the following lines is written in C:





Basic components of a 5G base station

The basic components of a 5G BS, which are illustrated in Figure 1 , mainly include communication equipment and power supply equipment.

Contact Us

For catalog requests, pricing, or partnerships, please visit:
<https://peyronies.us>