

How do photovoltaic panels and motors match



Overview

In this video, you'll learn: ✓ How to select the correct system voltage (12V, 24V, or 48V) ✓ Why your battery voltage must match your inverter ✓ The role of a charge controller (PWM vs MPPT) ✓ The correct connection order: Panel → Charge Controller → Battery → Inverter ✓. In this video, you'll learn: ✓ How to select the correct system voltage (12V, 24V, or 48V) ✓ Why your battery voltage must match your inverter ✓ The role of a charge controller (PWM vs MPPT) ✓ The correct connection order: Panel → Charge Controller → Battery → Inverter ✓. To connect the solar motor circuit effectively, one must ensure that all components are compatible and properly aligned. Establish wiring connections, 3. Conduct checks for functionality. Detailed exploration of each of these aspects is. While panel quality and efficiency are critical, pairing them with the right inverter is just as important. In fact, the inverter acts as the "brain" of your system-converting the DC electricity generated by solar panels into usable AC power for your home or business. Along with these modifications, we will go over how to test and debug compatibility concerns, evaluate the need for inverter upgrades or panel replacements. Solar panel compatibility with plug and play systems is a crucial aspect often overlooked by homeowners wanting to install an autonomous photovoltaic system. This calculator automatically checks.

How do photovoltaic panels and motors match



Triglycerides: Why do they matter?

Why do high triglycerides matter? High triglycerides may contribute to hardening of the arteries or thickening of the artery walls, called arteriosclerosis. This condition increases the risk of

Solar Panel Compatibility: Matching Panels with Plug

Compatibility between solar panels and plug and play systems directly conditions your photovoltaic installation's success. A methodical



How well do face masks protect against COVID-19?

Face masks can help slow the spread of coronavirus disease 2019 (COVID-19). Learn about mask types, which masks to use and how to use them.

Fatty liver disease (MASLD)

Compared with a healthy liver (top), a fatty liver (bottom) appears bigger and discolored. Tissue samples show extra fat in fatty liver disease, while inflammation and advanced scarring are seen in metabolic



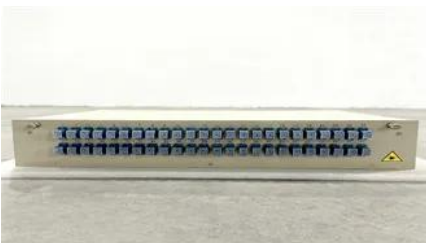
How to connect the solar motor circuit , NenPower



Solar panels convert sunlight into electrical energy, which is paramount for driving the motor. These panels come in various

Ileostomy

Can I swim? How do I shower? Do I need to buy different clothes? How will it affect my intimate life? Once you adjust, you'll likely find that it's possible to do many of the same activities you



[Osteopathic medicine: What kind of doctor is a D.O.?](#)

You know what M.D. means, but what does D.O. mean? What's different and what's alike between these two kinds of health care providers?

Statin side effects: Weigh the benefits and risks

The body needs cholesterol. But having too much cholesterol in the blood raises the risk of heart attacks and strokes. Statins block an enzyme the liver needs to make cholesterol. This



[Nonprescription acne treatment: Which products work best?](#)

How do you know which products are best for you? Before you decide, learn how acne medications work and what ingredients to look for. Then develop gentle skin care habits to help treat

Arthritis pain: Do's and don'ts

Arthritis is a leading cause of pain and limited mobility worldwide. There's plenty of advice on managing arthritis and similar conditions with exercise, medicines and stress management. But



[Solar Panel String Calculator: Series & Parallel Wiring Tool](#)

Calculate solar panel string configurations instantly. Find the right series/parallel wiring for your system voltage, current, and panel count with our free calculator.

Hydronephrosis

Diagnosis Diagnosis involves the steps that your healthcare team takes to find out if hydronephrosis is the cause of your symptoms. Your healthcare professional starts by asking you



[Solar Panel Compatibility Issues: Resolving Inverter](#)

Discover how to spot and fix inverter and module mismatches for smooth, efficient solar panel performance!

[Automated external defibrillators: Do you need an AED?](#)

An automated external defibrillator (AED) is a portable device that can be used to treat a person whose heart has suddenly stopped working. This condition is called sudden cardiac arrest.



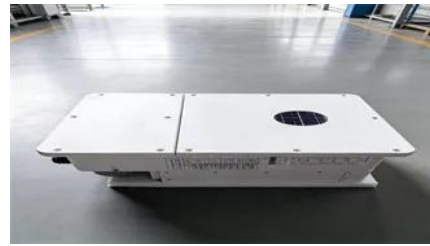


[Perfect Pairing: How to Match Solar Panels with the Right Inverter for](#)

When designing a solar energy system, many homeowners and businesses focus primarily on selecting the best solar panels. While panel quality and efficiency are critical, pairing

How to Match the Voltage of Your Solar Panels with

For any solar installer or a homeowner who wants to do it himself, understanding how to match voltages becomes important at the beginning of



Contact Us

For catalog requests, pricing, or partnerships, please visit:
<https://peyronies.us>