

How far should photovoltaic panels be from farmland



Overview

Did you know improper solar panel placement can reduce crop yields by up to 40% in adjacent fields?

Most U. states mandate 100-300 foot buffers between solar arrays and active croplands. But wait, isn't that sort of arbitrary?

Let's break down the science:. Farmers can benefit from solar energy in several ways-by leasing farmland for solar; installing a solar system on a house, barn, or other building; or through agrivoltaics. Agrivoltaics is defined as agriculture, such as crop production, livestock grazing, and pollinator habitat, located underneath. With global solar capacity projected to triple by 2030 , farmers and energy developers are clashing over land use. These solar panels generate electricity without emitting greenhouse gasses or the potential for soil or. Local regulations primarily determine how close a solar farm can be to a house, varying significantly across different jurisdictions. Formula: $\text{Spacing} = \text{Height} / \tan(\text{Solar Altitude})$. Solar altitude depends on latitude, tilt, and solar declination for the selected date.

How far should photovoltaic panels be from farmland



[Federal Acquisition Regulation; Federal Acquisition Circular 2025-04](#)

This document summarizes the Federal Acquisition Regulation (FAR) rules agreed to by OFPP, DoD, GSA, and NASA (collectively referred to as the Federal Acquisition Regulatory Council)

Federal Acquisition Regulation

The Federal Acquisition Regulation (FAR) is the principal set of rules regarding government procurement in the United States. The document describes the procedures executive branch



FEDERAL ACQUISITION REGULATION (FAR)

FAR Case 2021-015, "Disclosure of Greenhouse Gas Emissions and Climate-Related Financial Risk," will require certain Federal contractors to publicly disclose their greenhouse gas emissions, and

[Federal Acquisition Regulation \(FAR\) Guide - Key Rules for](#)

Understand the Federal Acquisition Regulation: key FAR parts every contractor must know, how FAR governs procurement, and navigating FAR compliance requirements.





Agrivoltaics Pathway

A comprehensive study is needed to understand the economic viability of agrivoltaics for your specific farm. This study is important in making sure your desired agricultural activities are compatible with



Farms Solar Panel Placement Guide, Best

Should I place solar panels near farm equipment that creates dust? Ideally, solar panels should be placed at least 100 feet



FAR , FAI.GOV

An official website of the United States government Here's how you know



[Optimal Solar Panel Row Spacing Calculator , SolarMathLab](#)

Using this calculator, you can determine the ideal distance between rows based on your location, panel tilt, height, and seasonal sun position, ensuring your solar array performs at its best all year round.

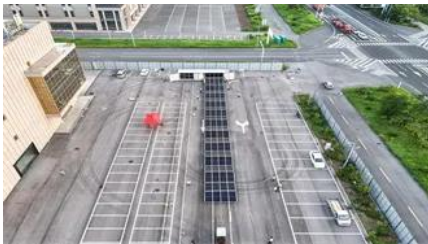


Farmer's Guide to Going Solar

The height of photovoltaic (PV) panels can be raised to allow for easier access to crops. Raising the height of PV panels, however, can increase the cost of the solar installation due to the need for

Conservation Considerations for Solar Farms

Maintaining a healthy perennial vegetative cover on the soil under and between solar panel rows to encourage infiltration and prevent erosion. Ideally, the vegetated distance between the rows of



[How Far Should Photovoltaic Panels Be from Farmland? Balancing](#)

Meta Description: Discover science-backed guidelines for photovoltaic panel placement near farmland. Learn about legal requirements, agrivoltaic innovations, and global case studies optimizing solar

Federal Acquisition Regulation

The Federal Acquisition Regulation (FAR) is the primary regulation for use by all executive agencies in their acquisition of supplies and services with appropriated funds.



How Close Can a Solar Farm Be to a House?

For example, a solar farm might be required to maintain a 250-foot setback from properties with residential zoning or use. The height of solar panels is also often regulated, typically

Health Risks Living Near Solar Farm: Are They Real?

The land requirements for an ideal solar farm installation involves considering various factors,



including the size and capacity of the solar



eCFR :: 48 CFR Chapter 1 -

Learn more about the eCFR, its status, and the editorial process.



DPC , Defense Acquisition Regulations System , FAR

Federal Acquisition Regulation (FAR) The FAR provides uniform acquisition policies and procedures for use by all Executive agencies. An electronic version of the official FAR is available at



FAR , Acquisition.GOV

Federal Acquisition Regulation Full FAR Download in Various Formats Browse FAR Part/Subpart and Download in Various Formats



[The Federal Acquisition Regulation \(FAR\): Answers to Frequently](#)

The FAR, which is codified in Title 48 of the Code of Federal Regulations (C.F.R.), generally governs acquisitions of goods and services by executive branch agencies.



How to Calculate the Minimum Distance Between PV

Understand the importance of minimum installation distance for solar panels, calculation methods, and relevant regulations to ensure efficient

[Solar Panel Direction & Orientation: 2025 Complete Guide](#)

Optimizing your solar panel direction and orientation is one of the most impactful decisions you can make for your solar investment. The right



Contact Us

For catalog requests, pricing, or partnerships, please visit:
<https://peyronies.us>