

How many watts of solar energy is one square meter



How many watts of solar energy is one square meter



Many: Definition, Meaning, and Examples

Many (noun): the majority of people in a group, often contrasted with the few "Many" is a word used to signify a large but indefinite number of people or things.

[MANY definition and meaning , Collins English Dictionary](#)

You use many to indicate that you are talking about a large number of people or things. I don't think many people would argue with that. Not many films are made in Finland. Do you keep many books



Solar Power Per Square Meter Calculator

A typical solar panel produces 150-250 watts per square meter under standard test conditions (1,000 W/m² irradiance, 25°C). In real-world conditions, expect 120-200W/m² during peak sun hours.

[What Does many Mean? Definition & Examples , Dictionary](#)

Learn what many means with clear definitions, pronunciation, synonyms, and real-world examples. Simple explanations to help you use many correctly.





Solar Panel Output Per Square Meter

Discover how much electricity solar panels generate per square meter, explore efficiency factors, technology comparisons, and future innovations in photovoltaic energy.

How many watts per square meter is a solar panel?

The average power output of a solar panel is approximately 150 to 400 watts per square meter, depending on various factors including the

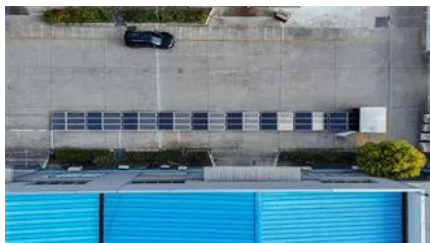


MANY Definition & Meaning

The meaning of MANY is consisting of or amounting to a large but indefinite number. How to use many in a sentence.

MANY Synonyms & Antonyms

Find 74 different ways to say MANY, along with antonyms, related words, and example sentences at [Thesaurus](#) .



MANY Definition & Meaning , Dictionary

MANY definition: constituting or forming a large number; numerous. See examples of many used in a sentence.

MANY , English meaning

We use the quantifiers much, many, a lot of, lots of to talk about quantities, amounts and degree. We can use them with a noun (as a determiner) or without a noun (as a pronoun).



Solar Power per Square Meter Calculator

As per the recent measurements done by NASA, the average intensity of solar energy that reaches the top atmosphere is about 1,360 watts

Contact Us

For catalog requests, pricing, or partnerships, please visit:
<https://peyronies.us>