

# How much electricity do 5G base stations actually consume



## How much electricity do 5G base stations actually consume



### [MUCH definition and meaning , Collins English Dictionary](#)

You use much to indicate the great intensity, extent, or degree of something such as an action, feeling, or change. Much is usually used with 'so', 'too', and 'very', and in negative clauses with this meaning.



### What does much mean?

Much is an adjective that refers to a large quantity, amount, or degree of something. It indicates a substantial extent or level of something, generally implying a significant or notable difference or



### How much power does 5G consume?

Many Bits Per Second Takes A Lot of Electricity  
5G Will only Increase Our Appetite For Data  
Data-Driven Energy Consumption Sustainable  
Electricity Consequences of 5G For The Environment  
Currently, three percent of the world's energy demand comes from wireless communications(4). Telecom providers expect their energy costs to increase by 150-170 percent by 2026 with the advent of 5G technology, according to a study by Vertiv, a U.S. network service provider. That's almost a threefold increase compared to 4G(5). One 5G base station i See more on jrseco Environmental Health Trust

### Energy Consumption of 5G, Wireless Systems and the

"A 5G base station is generally expected to consume roughly three times as much power as a 4G base station. And more 5G base stations are needed to cover

### What is the Power Consumption of a 5G Base Station?

These 5G base stations consume about three times the power of the 4G stations. The main reason for this spike in power consumption is the addition of massive MIMO and beamforming,



### **Much Definition & Meaning , YourDictionary**

Much definition: Great in quantity, degree, or extent.

### Power consumption analysis of access network in 5G mobile

The network power efficiency with the consideration of propagation environment and network constraints is investigated to identify the energy-efficient architecture for the 5G mobile



### **MUCH Definition & Meaning**

The meaning of MUCH is great in quantity, amount, extent, or degree. How to use much in a sentence.

### Modelling the 5G Energy Consumption using Real-world Data:

To address this, we propose a novel deep learning model for 5G base station energy consumption estimation based on a real-world dataset. Unlike existing methods, our approach integrates the Base



### 5G masts estimated to consume about as much power as 73 households

To achieve gigabit speeds, the plan with 5G is to have it operate at very high frequencies of 24-26 Gigahertz. For this reason, 5G requires millions of new so-called "small cells," for example,

### **MUCH , English meaning**

MUCH definition: 1. a large amount or to a large degree: 2. a far larger amount of something than you want or need . Learn more.



### **Front Line Data Study about 5G Power Consumption**

The power consumption of a single 5G station is 2.5 to 3.5 times higher than that of a single 4G station. The main factor behind this increase in 5G power

### 5G Energy Costs: Base Stations, Efficiency, Emissions

A 5G base station consumes "four times more electricity" than its 4G counterpart, said Ding Haiyu, head of wireless and terminals at the China Mobile Research



### **Power consumption based on 5G**

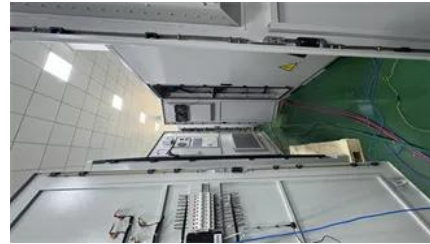


## communication

At present, 5G mobile traffic base stations in energy consumption accounted for 60% ~ 80%, compared with 4G energy consumption increased three times. In the future, high-density overlapping

### [A technical look at 5G energy consumption and performance](#)

We found that, in 2015, ICT networks consumed 1.15% of the total electricity grid supply globally and contributed to 0.53% of the global carbon emissions related to energy.



## Contact Us

---

For catalog requests, pricing, or partnerships, please visit:  
<https://peyronies.us>