

How much is the power of 5G base station in watts



How much is the power of 5G base station in watts

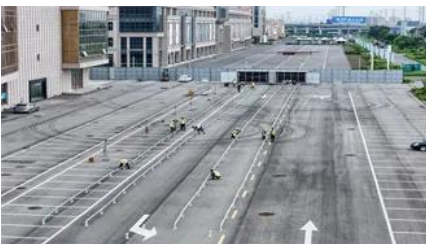


[How Much Power Does a 5G Base Station Consume? - Smart Solar](#)

On average, a 5G base station consumes between 1,000 to 3,000 watts. This is significantly higher than 4G base stations, which typically consume 500 to 1,500 watts.

[How Much Power Does 5G Base Station Consume?, Huijue Group E.](#)

The average 5G base station consumes 2.5-4 kW daily - equivalent to powering 40 refrigerators simultaneously. Three factors amplify this: Operators now spend 20-40% of OpEx on



Much, many, a lot of, a little, a few

Learn how to use 'much', 'many', 'a lot', 'little' and 'few' in this A1 grammar lesson. Clear rules, charts and exercises. Practise now!

[What is the Power Consumption of a 5G Base Station?](#)

Ericsson has been able to innovate a 5G base station that consumes only 20% energy when the traffic is low compared to a normal setup. This achieves through advanced software



[5G Telecom Cabinet Rectifier Efficiency Requirements:](#)

At full load, a 5G base station can use about 3700 watts-over three times more than a 4G site. You also need to deploy more 5G stations in dense

What does much mean?

Much is an adjective that refers to a large quantity, amount, or degree of something. It indicates a substantial extent or level of something, generally implying a significant or notable difference or



[Power consumption analysis of access network in 5G mobile](#)

The network power efficiency with the consideration of propagation environment and network constraints is investigated to identify the energy-efficient architecture for the 5G mobile

Energy Consumption of 5G, Wireless Systems and the

"A 5G base station is generally expected to consume roughly three times as much power as a 4G base station. And more 5G base stations are needed to cover



The 7 Pillars of 5G/6G RF System Design (Part 2): RF

5G base stations consume much more energy than 4G base stations: MTN Consulting, from April 2020, notes that the typical 5G site requires over 11.5 kW,

[5G base stations use a lot more energy than 4G base](#)

A typical 5G base station consumes up to twice or more the power



Power consumption based on 5G communication

At present, 5G mobile traffic base stations in energy consumption accounted for 60% ~ 80%, compared with 4G energy consumption



increased three times. In the future, high-density overlapping

Much Definition & Meaning , YourDictionary

Much definition: Great in quantity, degree, or extent.



MUCH , English meaning

MUCH definition: 1. a large amount or to a large degree: 2. a far larger amount of something than you want or need. Learn more.

5G Backup Power: Power Consumption & Battery Sizing

The transition from 4G LTE to 5G is not just a speed upgrade - it is a fundamental change in the power equation for wireless networks. A typical 5G base station with Massive MIMO antennas consumes



MUCH Definition & Meaning

The meaning of MUCH is great in quantity, amount, extent, or degree. How to use much in a sentence.

Contact Us

For catalog requests, pricing, or partnerships, please visit:
<https://peyronies.us>