

# How to connect the power supply to the indoor base station



## Overview

---

Start by connecting your base station CB radio to an external power supply, typically 120V AC, ensuring proper grounding for safety. Tonight I'll discuss a few other key items our HF Station list and go into a little detail on each. They will be The Power Supply, the Antenna Tuner, the Dummy Load, and the SWR. I'm a beginner trying to use one of my two CB radios as a "base station. Your system administrator will advise you which one to use. We hope it helps! We have selected the.

## How to connect the power supply to the indoor base station

---

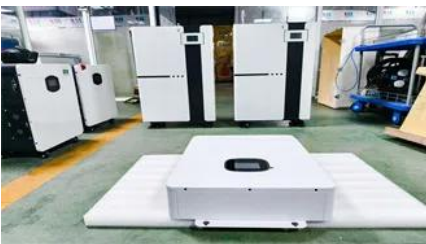


### Yealink Cordless - Connecting the base station

The base station should be used with Yealink original power adapter (5V/600mA) only. The use of the third-party power adapter may cause the

### Q Connect Information

Q Connect Information Q Parent Connect: Your online connection to your student's grades and attendance To access your student's grades, you will want to go to Q parent connect at:



### Garmin Connect

Running, walking, cycling, swimming, skiing, triathlons - no matter how you move, you can record your active lifestyle on Garmin Connect. It's the only online community created specifically for Garmin

### [Connect , Learning Software , McGraw Hill Higher Education](#)

With Connect, each of your students can enjoy a personalized digital learning experience designed to help them optimize study time and ramp up their grade potential.



### [Setting Up a Base Station CB Radio for Long Range Communication](#)



## power supply

I'm a beginner trying to use one of my two CB radios as a "base



## Sign In , Connect , McGraw Hill

Forgot your password? By clicking "Sign In", I confirm that I have read and agree to the terms of the McGraw Hill Terms of Use, the Video Viewing Notice, the Consumer Purchase Terms if applicable,



## connectED

Please Login with your McGraw-Hill credentials to

Start by connecting your base station CB radio to an external power supply, typically 120V AC, ensuring proper grounding for safety. Double-check connections to avoid electrical issues



## How to Set Up a Base Station CB System: A Complete

This guide will walk you through the basic understanding of Base Station CB System, how to install them and how to do that right



## Student Portal

Q Student Connection will provide you access to your class assignments, academic history, assessment scores, report cards, etc. This portal is available to all FUSD K-12 students with a computer account.

view this item.

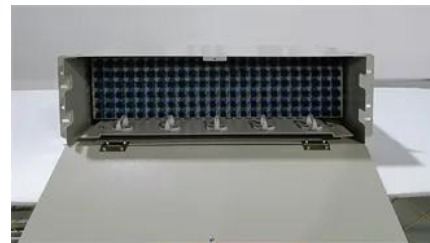


### [CB Radio Base Station Equipment Recommendations and Advice](#)

The basic components for a Base Station CB System include a CB radio, power supply (if you are using a mobile CB radio instead of a base station CB radio), coax, and an antenna. The article is designed

### [IBS NG Indoor Base Station Overview , PDF , Power Supply](#)

Describe the installation process of the IBS NG indoor base station, focusing on attachment and wiring. Why is precise installation critical for its operational efficacy?



### **Connect**

Enter your 20-digit Connect access code and click REDEEM. Purchase access with either a credit card by clicking Purchase or Paypal account by clicking PayPal under the desired option. Early in the

### **Setting Up Your Ham Radio Station: A Step-by-Step**

In summary, setting up your ham radio station involves connecting and configuring your transceiver and antenna, powering your station with an appropriate power





## [How To Power And Connect A CB Radio To a Home Base: Step-By](#)

While setting your CB base station up might seem a bit daunting, it's actually a surprisingly simple and straightforward process. Here's how to do it.



## **Connect**

Forgot Password?



## [How to convert a mobile radio to a home base station? : r/gmrs](#)

You can connect to the radio to a battery, then use a battery charger or solar panel (during the day of course) to charge it back up. This allows for use even when the power is out.

## **Contact Us**

---

For catalog requests, pricing, or partnerships, please visit:  
<https://peyronies.us>