

# Power consumption of 5G micro base stations

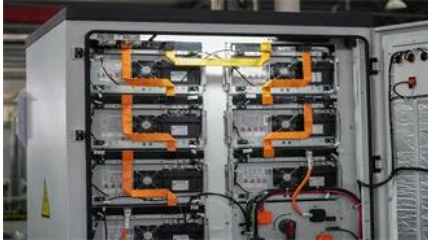
**1mwh** (500kw/1mw)

AIR COOLING  
ENERGY STORAGE CONTAINER



## Power consumption of 5G micro base stations

---



### Power consumption based on 5G communication

This paper proposes a power control algorithm based on energy efficiency, which combines cell breathing technology and base station sleep technology to reduce base station energy consumption

### [Running Python scripts in Microsoft Power Automate Cloud](#)

I use Power Automate to collect responses from a Form and send emails based on the responses. The main objective is to automate decision-making using Python to approve or reject the



### [Comparison of Power Consumption Models for 5G Cellular Network](#)

Power consumption models for base stations are briefly discussed as part of the development of a model for life cycle assessment. An overview of relevant base station power

### [Power consumption analysis of access network in 5G mobile](#)

The network power efficiency with the consideration of propagation environment and network constraints is investigated to identify the energy-efficient architecture for the 5G mobile



### Energy Consumption of 5G, Wireless Systems and the

Here we develop a large-scale data-driven framework to quantitatively assess the carbon emissions of 5G mobile networks in China, where over 60% of the global

### formatDateTime in Power Automate Desktop

You are confusing Power Automate with Power Automate Desktop. The link you provide is for Power Automate, so those functions won't work in the PAdesktop. There is an action named



### Refresh powerBI data with additional column

In Power BI Desktop, right-click on your dataset under Fields ('VoterList' in this case), and select Edit query: In Power Query Editor, select Advanced Editor: In Advanced Editor, increment

### [Power Automate - Some SharePoint List Columns Not Appearing in](#)

I'm working on a Power Automate flow that updates items in a SharePoint Online list. However, I'm facing an issue where certain columns (including Person/Group fields) are not



### [How to force Power BI service to use Local timezone](#)

Both approaches work OK in Power BI desktop report, However once I published to Power BI service and after several refreshes (initially it was NZ time), the time turn back to UTC time. I don't

### [Power Query code to refer to another query \(and how buffering works\)](#)

Is this just part of the building process? Or If I have one query A that loads across the network and 5 follow up queries that refer to query A will power query / excel be reading the across



### [Modelling the 5G Energy Consumption using Real-world](#)



Data:

To address this, we propose a novel deep learning model for 5G base station energy consumption estimation based on a real-world dataset. Unlike existing methods, our approach integrates the Base

What is the Power Consumption of a 5G Base Station?

These 5G base stations consume about three times the power of the 4G stations. The main reason for this spike in power consumption is the addition of massive MIMO and beamforming,

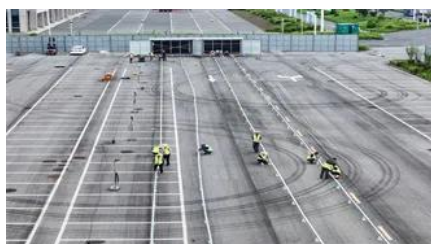


**Extract Value from Array in Power Automate**

Extract Value from Array in Power Automate  
Asked 1 year, 5 months ago Modified 1 year ago  
Viewed 8k times

**How to Read CSV file using Power Automate?**

You can retrieve the contents of the CSV file using the Get file content action in Power Automate/Microsoft Flow, and then using the Parse CSV action to transform the file contents into a



**Power BI: excluding a visual from a slicer**

On the Power BI Desktop menu, select the Format menu under Visual Tools, and then select Edit interactions. You need to have the slicer selected. Only then you see the according Filter

How can I use "e" (Euler's number) and power operation?

How can I write  $1 - e^{(-value1^2/2*value2^2)}$  in Python? I don't know how to use power operator and e.



## Contact Us

---

For catalog requests, pricing, or partnerships, please visit:  
<https://peyronies.us>