

# Power plant energy storage battery system configuration



## Power plant energy storage battery system configuration



### [Power Automate - Some SharePoint List Columns Not Appearing in](#)

I'm working on a Power Automate flow that updates items in a SharePoint Online list. However, I'm facing an issue where certain columns (including Person/Group fields) are not



### [How to force Power BI service to use Local timezone](#)

Both approaches work OK in Power BI desktop report, However once I published to Power BI service and after several refreshes (initially it was NZ time), the time turn back to UTC time. I don't



### **Extract Value from Array in Power Automate**

Extract Value from Array in Power Automate  
Asked 1 year, 5 months ago Modified 1 year ago  
Viewed 7k times



### [How can I use "e" \(Euler's number\) and power operation?](#)

How can I write  $1 - e^{(-value1^2/2*value2^2)}$  in Python? I don't know how to use power operator and e.



### **Power Automate**

I signed out and in multiple times in "power automate". I also opened the "sharepoint app" in Office365 (whatever you're supposed to do with it) which worked fine. The sharepoint connector in

[What is the C++ function to raise a number to a power?](#)

Raise a floating point to power 1/3 (cube root)  
There is also dedicated function for that, just call `std::cbrt`. Raise integer constant 2 to a positive integer power Use a left shift `<<` with 1 as base. The exponent

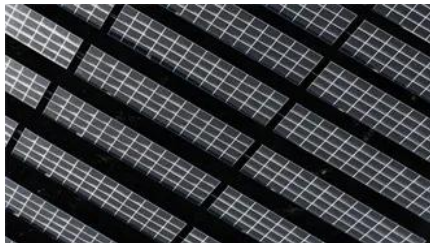


[Power Query code to refer to another query \(and how buffering works\)](#)

Is this just part of the building process? Or If I have one query A that loads across the network and 5 follow up queries that refer to query A will power query / excel be reading the across

[Running Python scripts in Microsoft Power Automate Cloud](#)

I use Power Automate to collect responses from a Form and send emails based on the responses. The main objective is to automate decision-making using Python to approve or reject the



[Battery Energy Storage System \(BESS\): Design, Applications & Grid](#)

Learn how Battery Energy Storage System (BESS) works, its applications, battery chemistry, thermal management, and role in grid stability.

**Utility-scale battery energy storage system (BESS)**

This reference design focuses on an FTM utility-scale battery storage system with a typical storage capacity ranging from around a few megawatt-hours (MWh) to hundreds of MWh.



**How to Read CSV file using Power Automate?**

You can retrieve the contents of the CSV file



**Power BI: excluding a visual from a slicer**

On the Power BI Desktop menu, select the Format menu under Visual Tools, and then select Edit interactions. You need to have the slicer selected. Only then you see the according Filter

using the Get file content action in Power Automate/Microsoft Flow, and then using the Parse CSV action to transform the file contents into a



[A framework for the design of battery energy storage systems in.](#)

This paper introduced, derived, and validated a methodology for evaluating the optimal electric power delivery policy, with a (time)step-by-(time)step approach, of battery energy storage

## Contact Us

---

For catalog requests, pricing, or partnerships, please visit:  
<https://peyronies.us>