

Power requirements for Tonga solar container communication station



[Tonga communication base station power requirements](#)

This research paper presents the results of the implementation of solar hybrid power supply system at telecommunication base tower to reduce the fuel consumption at rural area.

[Power Automate - Some SharePoint List Columns Not Appearing in](#)

I'm working on a Power Automate flow that updates items in a SharePoint Online list. However, I'm facing an issue where certain columns (including Person/Group fields) are not



[How can I use "e" \(Euler's number\) and power operation?](#)

How can I write $1 - e^{(-value1^{2/2} * value2^2)}$ in Python? I don't know how to use power operator and e.

Meidecc Tonga , ESAFETY SOLAR CONTAINER

Get technical specifications, product datasheets, and installation guides for our solar and storage solutions, including PV systems, container power stations, energy storage cells, battery cabinets,



[Power Query code to refer to another query \(and how buffering works\)](#)

Is this just part of the building process? Or If I have one query A that loads across the network and 5 follow up queries that refer to query A will power query / excel be reading the across

[Tonga solar container communication station EMS Power](#)

That's exactly what container energy storage battery power stations are achieving today. These modular systems are revolutionizing how we store and distribute renewable



[Tonga Solar solar container communication station Specifications](#)

Here, we outline an optimized, phased pathway for integrating solar and wind energy into a globally interconnected and fully coordinated power system. Design of

[Tonga Communication Base Station Power Requirements](#)

Hence, this study addresses the feasibility of a solar power system based on the characteristics of South Korean solar radiation exposure to supply the required energy to a remote cellular base station.



[How do I refresh an Excel Power Query using Power Automate Online?](#)

0 I have data being pulled from a SharePoint list to an Excel file and I'm trying to use Power Automate online to create a scheduled flow that will trigger the "Refresh All" button for Power

[Running Python scripts in Microsoft Power Automate Cloud](#)

I use Power Automate to collect responses from a Form and send emails based on the responses. The main objective is to automate decision-making using Python to approve or reject the



formatDateTime in Power Automate Desktop



[Tonga solar-powered communication cabinet wind and solar](#)

The system is a hybrid of solar and thermal power, which will ensure a reliable and efficient supply of electricity, even during inclement weather. The OIREP project is the longest

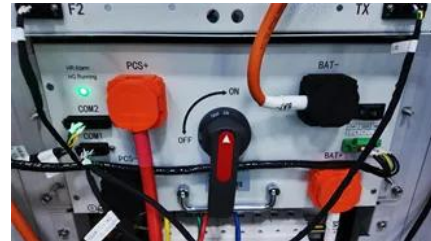


[Tonga communication base station wind power 6 25MWh](#)

This large-capacity, modular outdoor base station seamlessly integrates photovoltaic, wind power, and energy storage to provide a stable DC48V power supply and optical distribution.



You are confusing Power Automate with Power Automate Desktop. The link you provide is for Power Automate, so those functions won't work in the PADesktop. There is an action named



TONGA POWER LIMITED POWERING THE SUSTAINABLE

We are committed to excellence in solar power plants and energy storage solutions. With complete control over our manufacturing process, we ensure the highest quality standards in every solar



How to Read CSV file using Power Automate?

You can retrieve the contents of the CSV file using the Get file content action in Power Automate/Microsoft Flow, and then using the Parse CSV action to transform the file contents into a

Extract Value from Array in Power Automate

Extract Value from Array in Power Automate
Asked 1 year, 5 months ago Modified 1 year ago
Viewed 8k times



[Tonga Solar Communication Base Station Specifications](#)

Solar telecommunications base station For base station load smaller than 2kW, it is a suitable power supply system scheme in remote areas, especially under the trend of high global crude oil

Refresh powerBI data with additional column

In Power BI Desktop, right-click on your dataset under Fields ('VoterList' in this case), and select Edit query: In Power Query Editor, select Advanced Editor: In Advanced Editor, increment



Power BI: excluding a visual from a slicer

On the Power BI Desktop menu, select the Format menu under Visual Tools, and then select Edit interactions. You need to have the slicer selected. Only then you see the according Filter

Contact Us

For catalog requests, pricing, or partnerships, please visit:
<https://peyronies.us>