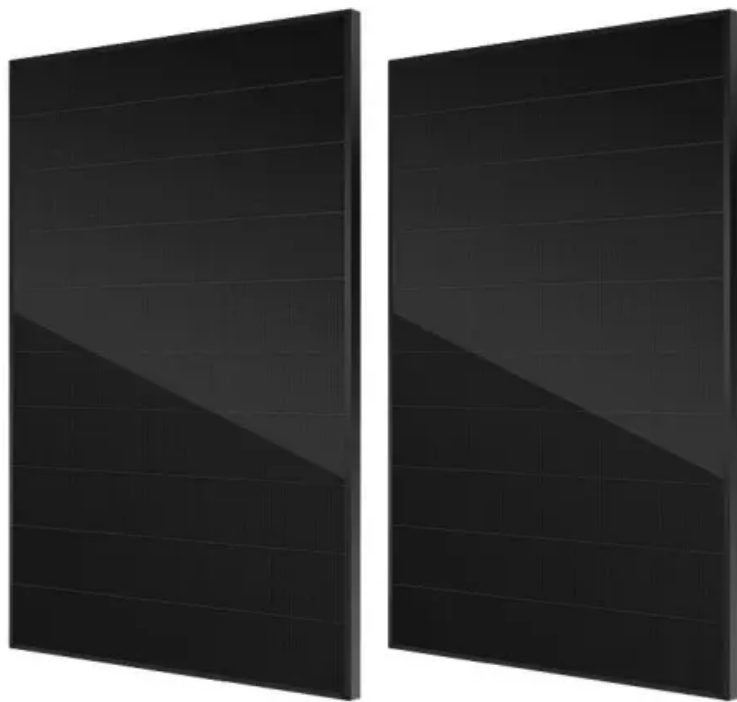


The voltage of the inverter is low as soon as the appliance is turned on



The voltage of the inverter is low as soon as the appliance is turned



Voltage across V_{ce} in a common emitter BJT

In this case, the voltage across the current source I depends only on R . With other words: The voltage across a constant current source depends on the external network only.

Lithium battery and inverter troubleshooting

An inverter has capacitors that will try to charge as soon as a DC source (battery) is connected. This can be a huge amperage draw in a very short period of time that can overwhelm



Is it okay to use a power supply that provides slightly more voltage

Any device will only draw as much current as it needs, so long as its power source can supply it. However, the laptop adapter's voltage is a full volt above the specified 18 V; this will cause more

How much voltage/current is "dangerous"?

Likewise, if the current and voltage are below a certain level, a person can--given enough time--safely absorb an arbitrarily large amount of electrical energy. Further, if voltage is sufficiently low, the





How to reduce DC voltage using resistors?

How would one go about using a 12 V DC power source to power something which needs 4.5 V DC using resistors? Is there a way to determine how much adding a resistor would drop the

[Power Inverter Troubleshooting - Common Problems and How](#)

One of the most frequent problems with power inverters is low input voltage. This occurs when the battery supplying power to the inverter is not providing enough voltage for the inverter to



[Low Voltage Error? Causes and Fixes for Inverters - EDECOA](#)

Why does my inverter show low voltage even when the battery seems full? Battery voltage may appear normal at rest but drop below cutoff under load. Always measure voltage while

[How are current and voltage related to torque and speed of a](#)

Voltage instead "regulates" how fast a motor can run: the maximum speed a motor can reach is the speed at which the motor generates a voltage (named "Counter-electromotive force")



How to Address Inverter Low Voltage Issues for

In this article, we explore practical strategies to address inverter low voltage issues, ensuring reliable and efficient operation in demanding

[Voltage Troubles? A Guide to Diagnosing Inverter Low Voltage](#)

Many people face issues with inverter low voltage at some point in their lives. In this blog post, we will guide you on how to diagnose and potentially fix these problems.



What exactly is voltage?

The total voltage you get from one out and back, even with a high temperature difference is pretty small. By putting many of these out and back combinations together, you can get a useful voltage. A single

[How to calculate voltage drop over and power loss in wires](#)

How do I calculate the voltage drop over wires given a supply voltage and a current? How do I anticipate on voltage drop so that the final load has the correct supply voltage? What will be the power



What, exactly, is voltage?

And also if voltage is like gravitational potential energy, how does more voltage mean more current? And here our nice analogy breaks down. In this sense voltage is more like pressure in

DIY Guide: How to Fix Common Inverter Problems at

Verify Battery Voltage: Use a multimeter to check the battery voltage. If it's below the



inverter's minimum requirement, charge the battery fully or consider



[How is it possible to have high voltage and low current? It seems to](#)

7 One word: Resistance. Recall that Voltage is calculated by multiplying the current by the resistance. You can have a high potential difference (which is what voltage is), and a low current,

[Step-by-Step Inverter Troubleshooting Guide , Artizono](#)

Ensure that the AC input voltage at the inverter terminals exceeds 90VAC to prevent low-voltage shutdowns. Install a voltage stabilizer or an



Common Inverter Troubleshooting Methods and

This guide walks through real-world inverter troubleshooting methods and matching solutions, blending industry practice, service data, and

[Do electrons actually flow when a voltage is applied?](#)

The important thing is this: charge carriers (electrons being one of such) can be used to transmit an electromotive force (usually called just voltage). This is a pretty ordinary concept, really.



[Troubleshooting Power Inverter Issues - Online Tool](#)



By spotting issues like an inverter not starting or having output voltage problems, you can fix them. This ensures you have power when you need it

[Why Your Inverter Shows "Input Voltage Too Low" and How to Fix It](#)

When your inverter displays "input voltage too low", it's like your car's dashboard warning light - ignore it, and you risk system failure. This common alert affects multiple industries from solar energy farms to



Contact Us

For catalog requests, pricing, or partnerships, please visit:
<https://peyronies.us>