

# What is the temperature of the outdoor solar integrated machine



## Overview

---

The operating temperature range of solar systems is typically  $-20^{\circ}\text{C}$  to  $55^{\circ}\text{C}$ . Manufacturers rate solar panels under Standard Test Conditions (STC), which include: In real-world conditions, solar panels typically operate  $20-40^{\circ}\text{C}$  above ambient air temperature, meaning a  $30^{\circ}\text{C}$  ( $86^{\circ}\text{F}$ ) day can result in panel temperatures reaching  $50-70^{\circ}\text{C}$  ( $122-158^{\circ}\text{F}$ ). They will ask: Do they need to add air conditioning to keep the solar system working stably and efficiently?

First of all. N-net Extreme High-Temperature Outdoor Power Supply Box, CCTV Outdoor Box Solution: Unfazed by  $55^{\circ}\text{C}$  Heat, Enabling 24/7 Uninterrupted Operation\* Your application scenario is similar to the deserts of the Middle East or the rainforests of Southeast Asia-choose N-net More than just high-temperature. An increase in the PV cell temperature in real operating conditions reduces the actual output of a solar PV system. A 1D transient multi-layered model, based on the fundamentals of the finite difference method, has been developed to predict the operating cell temperature. Since a PV system operates. Solar inverters are commonly installed in outdoor environments, where they are exposed to the sun's rays and the surrounding air temperature. Another factor that impacts inverter.

## What is the temperature of the outdoor solar integrated machine

---



### What is the best temperature for outdoor solar energy?

What is the best temperature for outdoor solar energy? 1. Optimal outdoor temperature for solar energy production is between 15-35°C (59-95°F),

### High temperatures (up to 80c when idle)

Just after boot CPU's temperature hangs around 50c, but with time, even when idle, it can reach up to 80c.



### New Fan Control DSDT

The first byte of each pair in the buffer is the high temperature threshold for the given fan speed that follows. So, for temps up to 40C, the fan is set to automatic (0xFF or 255) and since we

### DELL 5290 2in1 i7 8650u, Temperature too high

Hello, I have a Dell Latitude 5290 2 in 1 laptop. I have get efi from here: Dell 5290 2 in 1 , tonymacx86 And now, almost everything works great, including the mult



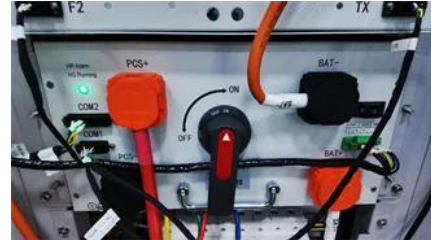
### NootedRed - AMD Radeon Graphics - macOS Sonoma



## High GPU idle temperatures on Catalina (RX 5700-XT)

Hi, I am new in Hackintosh. I just completed the windows 10 installation on my dual boot system, and I noticed something, the GPU idle temperature on Catalina was much higher than on my

I bought a second-hand Ryzen 7 5700g for GBP115 from eBay. Will be interesting to see how this 8-core/16-thread CPU/APU behaves in macOS. Already running Windows 11 on an Asus TUF



## High Temperature on ASUS Laptop!

Hi, I have and Asus Vivobook (X556UV) with high sierra. But my laptop stay always at 80? (With no program active) and arrive at 95? the cpu-fan is off

## Solar Panel Operating Temperature: Complete Guide

The optimal solar panel operating temperature is 25°C (77°F) under standard test conditions. However, practical performance considerations reveal



## [N-net Extreme Outdoor Power Supply Box for 24/7 Operation in 55?](#)

N-net Extreme High-Temperature Outdoor Power Supply Box, CCTV Outdoor Box Solution: Unfazed by 55? Heat, Enabling 24/7 Uninterrupted Operation? Your application scenario is similar to the

## gpu temperature info rx 580 8gb

gpu temperature info rx 580 8gb hi, what is the normal temperature of rx 580 8gb in mojave? thx.



## What is the working temperature range of a solar power

The operating temperature range of solar systems is typically -20°C to 55°C. Within this temperature range, the performance of the system is

## Software to check CPU temperature on OS X?

I just upgraded from the stock Intel cooler to a Corsair H55 and I want to check my CPU temperature on load and idle, so far all the software I have tried using haven't worked on my



## Temperature measurement of solar module in outdoor operating

In this paper, a method to determine the operating temperature of photovoltaic module in outdoor conditions using thermal imaging is presented. Importance of temperature in PV module

## rx 580 FAN not always spinning

why is it that my rx 580 fan not always on. it turns idle. and also how would I know if my rx 580 is fully working :) I attached herewith is my screenshot. and also.. how to be able to activate





## **New NVMe Recommendation**

Temperature control was solid too, with my motherboard's heatsink keeping it down to a peak of 61 degrees Celsius during those three tests. When idle, its temperature was between 51 and

## **Contact Us**

---

For catalog requests, pricing, or partnerships, please visit:  
<https://peyronies.us>